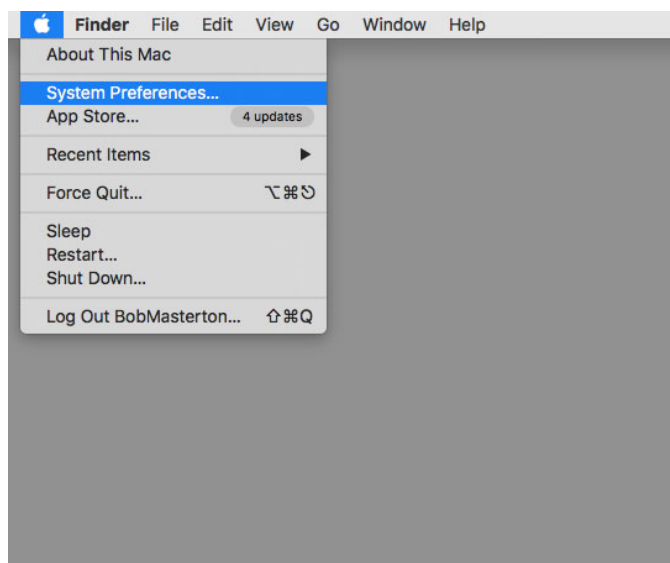
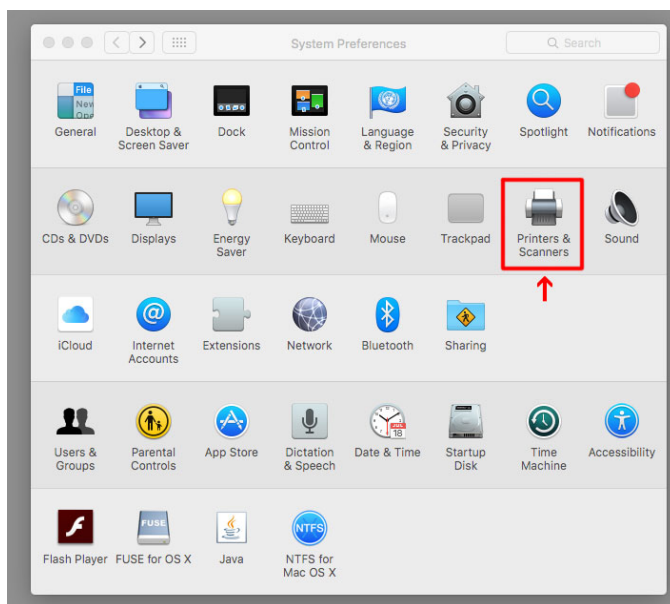


HOW TO: Add network printing queues to your device list in OSX

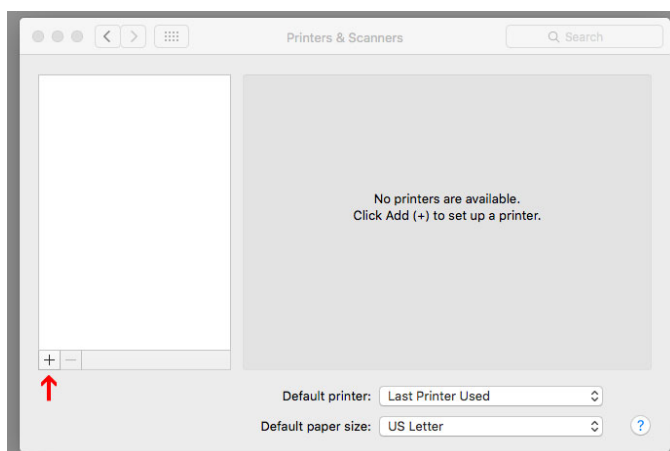
1: Navigate to “System Preferences” under the Apple menu in the upper left-hand corner.



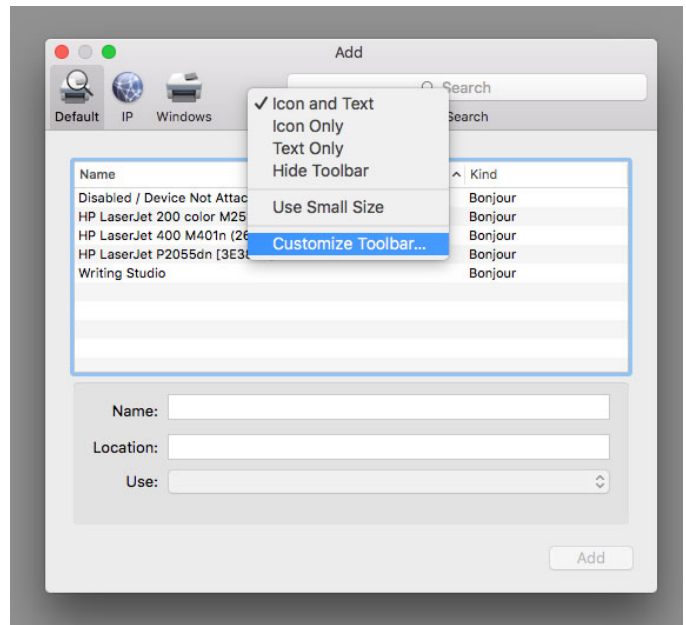
2: Select “Printers & Scanners” under System Preferences.



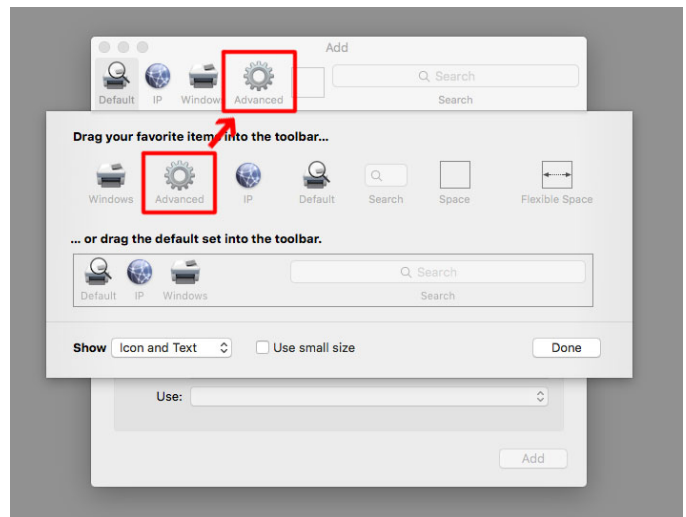
3: In the Printers & Scanners menu, click the “+” button at the foot of the device list to add a printer.



4: In the “Add” dialog, right click in the blank space at the top to invoke contextual options (or, if you do not have a two-button mouse, control + click.) From the contextual options, select “Customize Toolbar...”

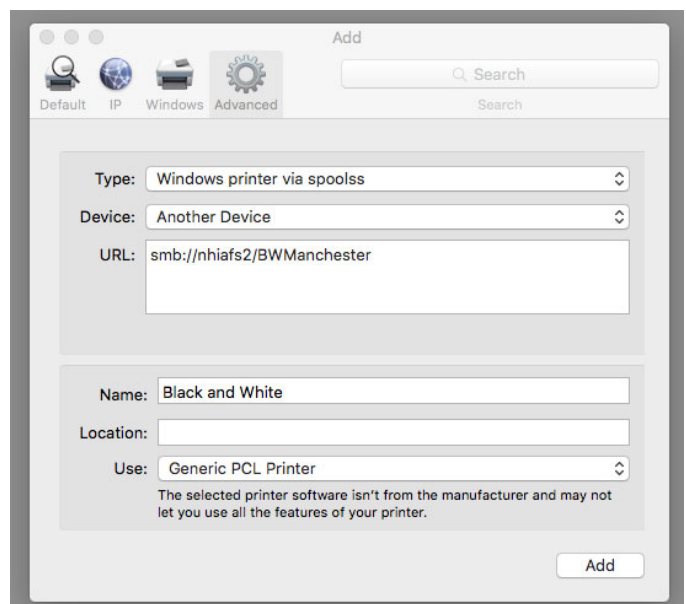


5: Drag the “Advanced Options” icon directly onto the toolbar in the ‘Add’ dialog, then click “Done.”



6: Under the “Advanced” tab of the “Add” dialog, enter or select the following information-

- Type:** Windows printer via spoolss
- Device:** Another Device
- URL:** smb://nhiafs2/BWManchester
- Name:** Black and White
- Location:** (leave blank)
- Use:** Generic PCL Printer

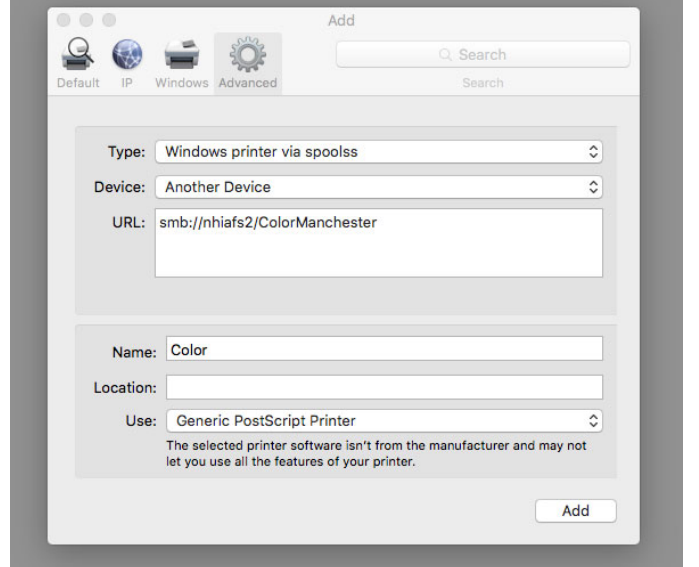


7: When the Setup dialog appears, make sure the check the Duplexer option to enable double-sided printing, then click "OK."



8: Repeat steps 5-7 with the following information to create the color queue.

Type: Windows printer via spoolss
Device: Another Device
URL: smb://nhiafs2/ColorManchester
Name: Color
Location: (leave blank)
Use: Generic PostScript Printer



9: Your network print queues will now appear in your device list as in the accompanying image and can be selected in any print dialog.

